

**With TÜV Test Certificates**

$p_{max.} = 315 \text{ bar}$   
 $Q_{max.} = 80 \text{ l/min}$

**Design**

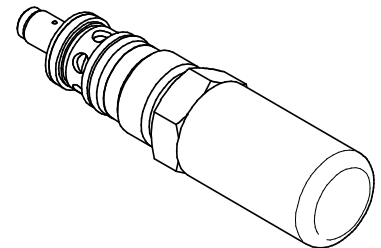
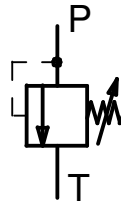
Pressure relief valve are designe as a seat valve with cushion piston. The seat valve provides a drainless sealing between the pressure port and the return port below the adjusted setting pressure. The cushion piston prevents uncontrolled oscillations of the poppet when opened. Due to improved streamlining the valve achieves high flow rates.

**Function**

The pressure relief valve meets the requirements of „AD-Merkblatt A2“and is officially approved fort he safety of hydraulic accumulators. The valve has been type tested by TÜV and can be supplied with TÜV test certificate upon request.

Safety valves with TÜV certificate are recommended if the build-in valves cannot be positioned to respond and there is no separate test bench available. The pressure is set by the manufacturer in stages of 10 bar. Higher pressure settings are avoided by means of a seal, however it is possible to relieve the hydraulic accumulator whne the pump is turned off. The valve is available as cartridge type DBE 6 or as threaded connection type DBG 6.

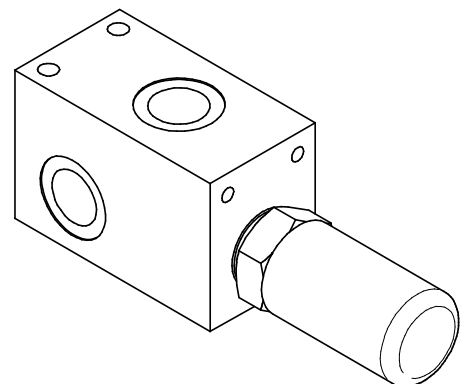
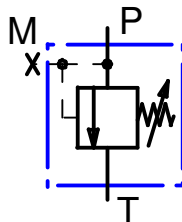
**Cartridge Type DBE 6**



**Threaded connection**

**Type DBG 6**

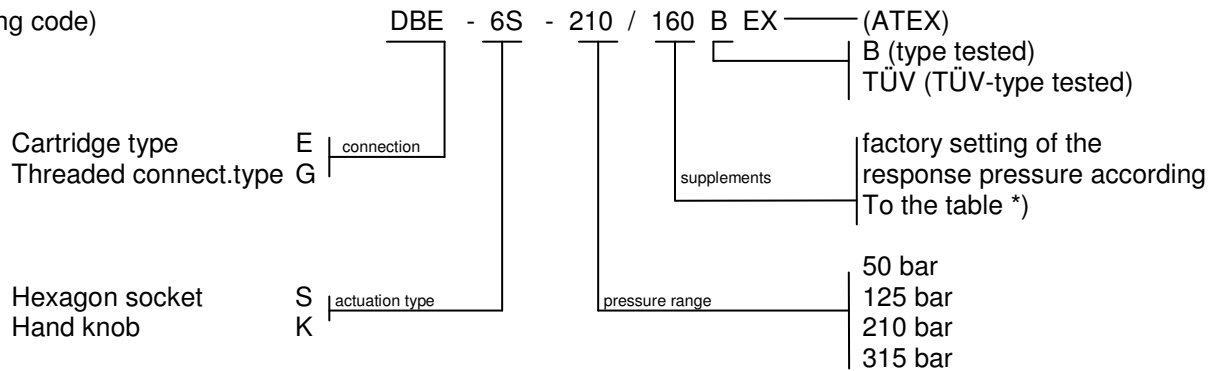
G 1/2 ISO 228



Alterations reserved

**Type**

(ordering code)



**Order-No.:** Standart types

Actuat-ion press. bar *)	Permis-sible flow l/min	TÜV-type-test approval mark No. **)	Order-No. (Seal kit: 11347)				
			Cartridge valve DBE -6		Thread.connection valve DBG - 6		
			K	S	K	S	
			B / TÜV	B / TÜV	B / TÜV	B / TÜV	
20	20	TÜV SV.XX-711.5.F.	20.20	...../13959	15751/13336	-	...../15710
30	30		30.30	-	30070/13338	-	29577/.....
40	40		40.40	-	15754/15755	-	26204/.....
50*	50		50.50	11678/11686	11682/15756	...../11730	11726/11734
60	40	TÜV SV.XX-711.5.F.	40.60	-	19622/13961	-	19623/.....
70	45		45.70	17056	17048/13962	-	-
80*	50		50.80	-	14487/13550	-	-
90	55		55.90	-	17326/.....	-	-
100*	60		60.100	-	15747/14247	-	17934/.....
120	60		60.120	-	13954	-	-
125	60		60.125	11679/11687	11683/11691	11723/11731	11727/.....
140*	65	TÜV SV.XX-711.5.F.	65.140	-	15748/13952	-	...../17770
150	70		70.150	-	15749/13955	-	19492/.....
160*	75		75.160	13956/.....	14185/13957	-	16741/.....
170	80		80.170	-	18710/.....	-	-
180*	80		80.180	...../13960	15750/14968	-	...../16008
190	80		80.190	-	-	-	-
200*	80		80.200	...../13963	15752/13964	-	-
210*	80		80.210	11680/11688	11684/11692	11724/11732	11728/11736
220	80	TÜV SV.XX-711.5.F.	80.220	-	-	-	-
230			80.230	-	33494/.....	-	33493/.....
240			80.240	-	-	-	-
250*			80.250	13958/.....	15029/13331	-	14541/14196
260			80.260	-	-	-	-
270			80.270	-	-	-	-
280			80.280	-	17049/.....	-	-
290			80.290	-	-	-	-
300			80.300	-	15753/13333	-	-
310			80.310	-	-	-	-
315*			80.315	11681/11689	11685/11693	11725/11733	11729/.....

\*) These valves are preferably available for delivery.  
(Adapted to common levels of accumulator pressure stage).  
)\*) XX= year of permission (TÜV-No; 5-year-Turnus)

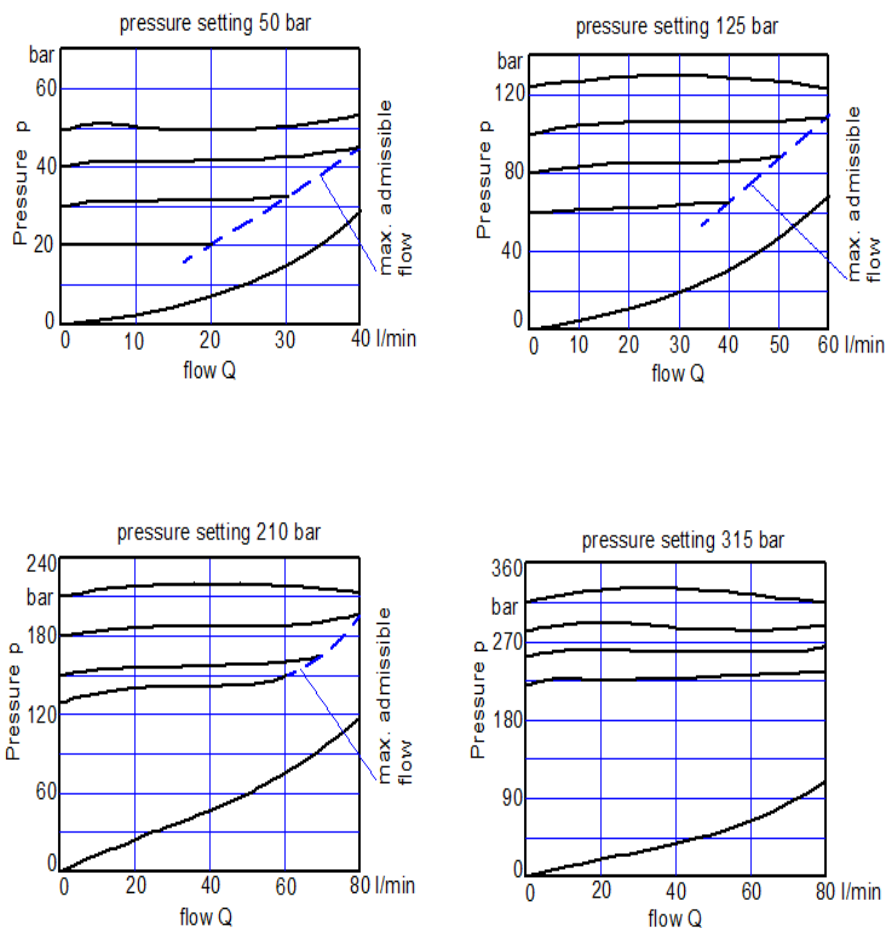
Alterations reserved

## Technical data

### Pressure setting range

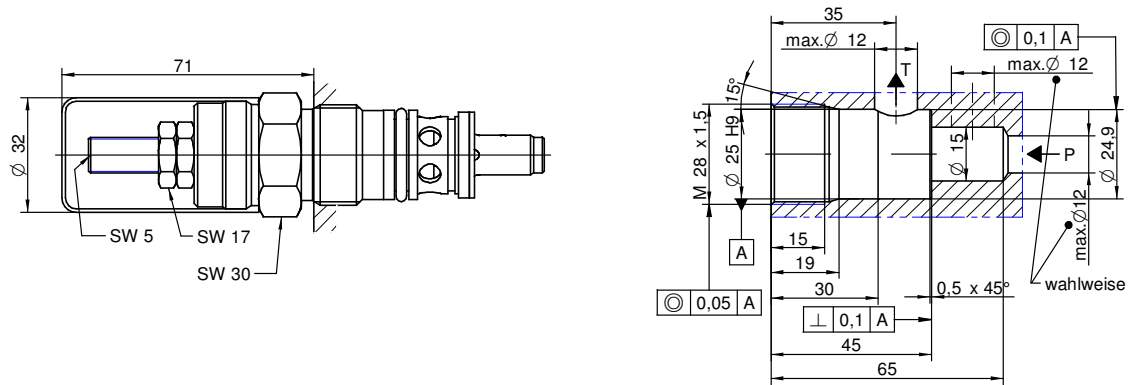
Port P	: up to 315 bar
Port T	: up to 50 bar
Recommended flow	: see characteristics
Liquid temperature range	: - 20 to + 70°C
Viscosity range	: 12 to 230 mm <sup>2</sup> /s (cSt)
Recommended filtration	: 25 µm abs.

### Characteristics (for fluid temperature 50° C, viscosity 36 mm<sup>2</sup>/s (cSt), threaded connection G 1/2)



Alterations reserved

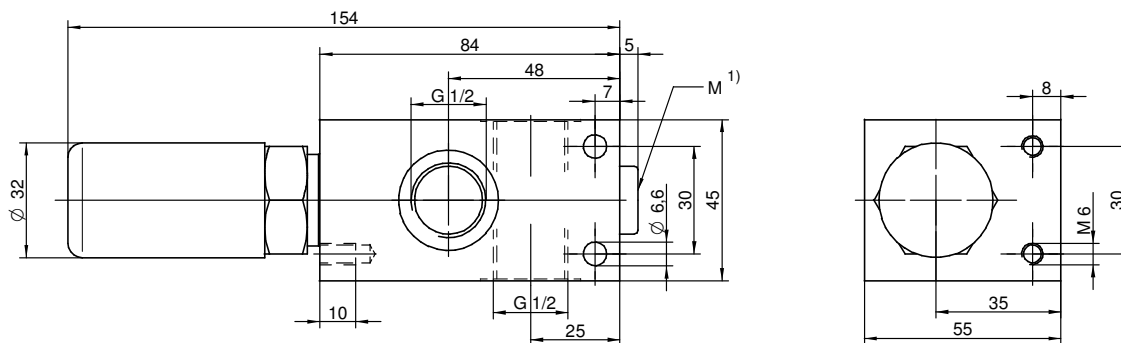
Cartridge valve



Tightening torque  $50^{+5}$  Nm

Weight: 0,35 kg

Threaded connection  
type



1) instrument terminal G 1/4

Weight: 1,5 kg

Other housing modifications for flange-mounting and flange-intermediating with master gauge for holes DIN 24340-A6 are delivered on request.

For dimensional drawing see data sheet 30-001-..