



Dreh- / Fräskompetenz
Turning / milling competence

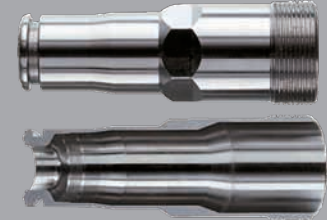
Automotive



Drehen, Fräsen, Tieflochbohren
turning, milling, deep hole drilling



Drehen, Kanten, Gewindestrehlen
turning, edging, thread chasing



Drehen, Fräsen, Gewindestrehlen
turning, milling, thread chasing



Drehen, Bohren, Räumen, Verzahnen
turning, drilling, gear cutting



Drehen, Gewindestrehlen, Bohren
turning, thread chasing, drilling



Drehen, Bohren, Gewindestrehlen
turning, drilling, thread chasing

Industrie - Industry



Drehen, Fräsen, Bohren
turning, milling, drilling



Drehen, Gewindefräsen, Bohren
turning, thread chasing, drilling



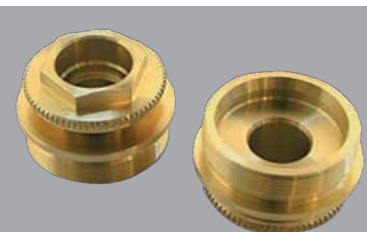
Drehen, Gewindestrehlen, Bohren
turning, thread chasing, drilling



Tieflochbohren, Bohren, Fräsen
deep hole drilling, drilling, milling



Drehen, Bohren, Fräsen
turning, drilling, milling



Drehen, Rändeln, Gewindestrehlen
turning, polygonal turning, thread chasing



Schalthebel
Gear levers



Anlenkgestänge zur Leuchtweitenregulierung
Control linkages for headlamp leveling



Verbindungs- und Schaltungsstangen
Connection and shift rods

Sonstige Fertigungskompetenzen
Other manufacturing competences

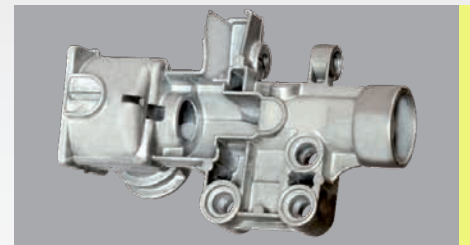
Fräsen - Milling



Nutzfahrzeuge
Commercial vehicles

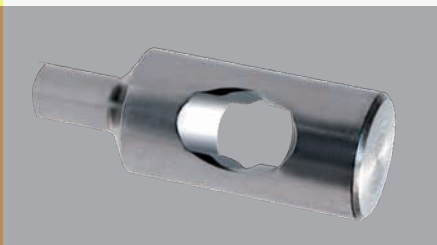


PKW
Personal cars

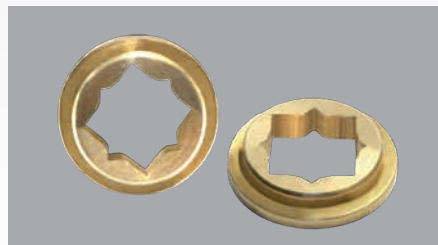


Nutzfahrzeuge
Commercial vehicles

Räumen - Broaching



Maschinenbau
Engineering

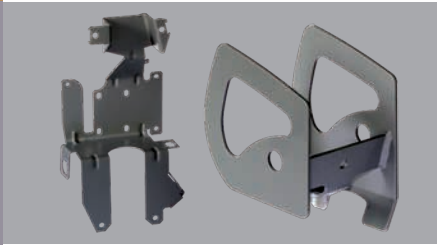


Elektroindustrie
Electrical industry



Nutzfahrzeuge
Commercial vehicles

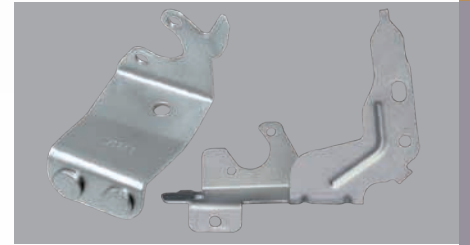
Stanzen - Punching



Schienenfahrzeuge
Rail vehicles

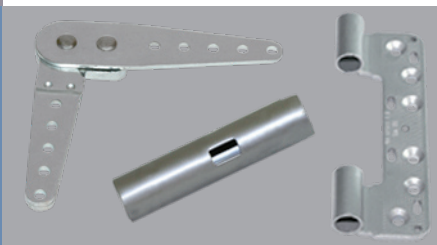


Sanitär
Sanitary industry



PKW
Personal cars

Schweißen - Welding



Möbelindustrie
Furniture industry



Nutzfahrzeuge
Commercial vehicles



Landwirtschaft
Agriculture